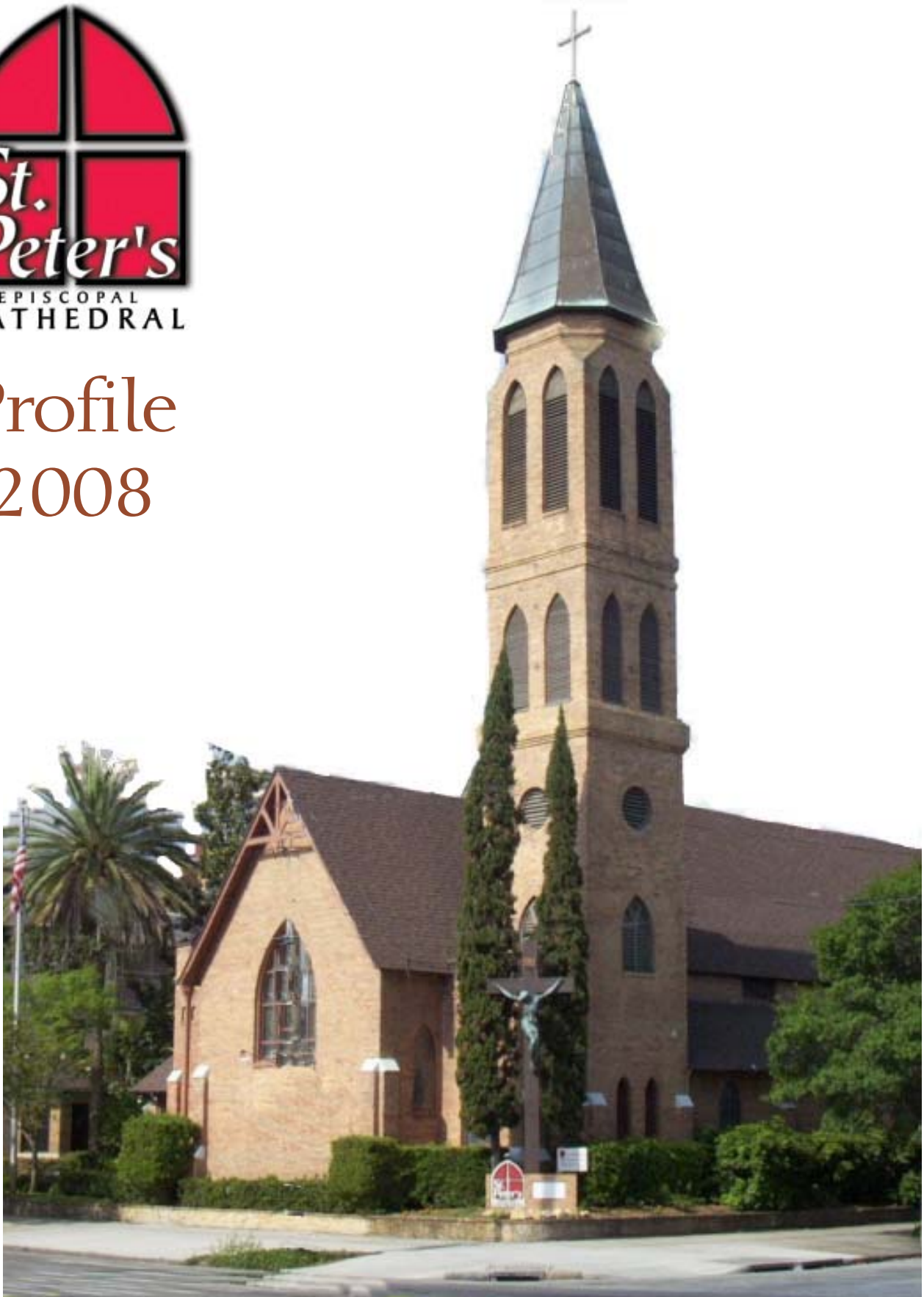




Profile 2008



St. Petersburg, Florida



St. Peter's Episcopal Cathedral Profile 2008

In 2009, St. Peter's Cathedral will observe the 120th anniversary of the founding of the mission that became St. Peter's. That year marks the 110th anniversary of the construction of our sanctuary. And it is the year in which we celebrate our 40th anniversary as the cathedral for the Diocese of Southwest Florida.

Also in 2009, we will move into a new building, currently under construction: 48,000 square feet in three stories, with offices, meeting space, commercial kitchen, and parish hall. Some of that space will be leased to tenants whose payments will offset part of the facility's \$7.7-million cost. The bishop of the Diocese of Southwest Florida will maintain a satellite office there. Our new space will replace aging, dysfunctional buildings that have inhibited our ministries and have been a constant financial and maintenance drain.

At this significant crossroads in our lives and ministries, we seek a new dean, who will join us as we honor our past and step boldly into our future. Our hope is that those new buildings will energize our ministries to those around us in downtown St. Petersburg: the poor and needy we often meet literally on our doorstep; those who come seeking music and the arts; residents of the new waterfront high-rises that have been part of the renaissance of downtown St. Petersburg in recent years; all who yearn for the life-giving Good News of God in Christ.

Perhaps God is calling you to join us.

Who We Are, Where We're Going

A lay leadership team has articulated three goals for St. Peter's:

- * To live more fully into our role as the cathedral for our diocese;
- * To define our role in downtown St. Petersburg;
- * To hire a Christian education director.

The statistics tell a worrisome story: Weekly attendance has been static at best in recent years. The number of baptized members has fallen. Plate and pledge have risen only because the pledgers we do have are giving more, not because their numbers have increased substantially. Meanwhile, expenses such as health care, insurance, and utilities have increased. Much of our growth has come from older singles and couples, not from young families

with children. Demographically speaking, we are an older, mostly white, well-educated, reasonably well-off congregation with about 350 active members and 800+ on the membership rolls.

All that said, we are a happy, faithful, and generous congregation that contributed more than \$60,000 last year, above the budget, to our outreach ministries. We like to get together, to eat, to have fun. During this time of building construction, living in smaller spaces than we're used to, we've learned to improvise, compromise, and innovate to carry on a rich and creative congregational life.

We value the diversity of worship styles we offer here. Some prefer a quiet service with no music on Saturday evenings and early Sunday mornings. Sundays at 9 a.m. there's a child-friendly service with hymns and choir. At 11:15 a.m. the service is a sung Eucharist with incense and choir. (That is the winter schedule; in summer, there are two Sunday morning services rather than three.) Sunday evenings at 6 our CAYA service — Come As You Are — offers Celtic prayers, music from around the world and Eucharist in the round, followed by a shared supper. A couple of times a year our house jazz band (the keyboardist is a member of our congregation) provides music for Sunday mornings or special services. Every weekday we read Morning and Evening Prayer and celebrate the Eucharist.

At the Foot of the Cross in Downtown St. Petersburg

St. Peter's brick Gothic cathedral, built in 1899 and expanded in 1925 (it seats 650), shares a city block with City Hall; with a residential hotel for the elderly and some small retail shops; with Christ United Methodist Church; and with the former sanctuary of the First Baptist Church, which we now own. (More about that later.) Across the street is Williams Park, with green lawns and a band shell, which is now largely occupied by the homeless. Other neighbors around this "town square" are First United Methodist Church, from whom we are renting temporary space during our building program; St. Petersburg College; American Stage Co., the city's resident Equity company, which is building a new theater there; restaurants and small businesses; an office of the Church of Scientology, whose world headquarters is in nearby Clearwater; and the \$60-million headquarters of Progress Energy, the utility, which plans to add a boutique hotel and condominiums.

This intersection of government, commerce, education, the arts, the high-rise and the homeless, the old and the young seems a perfect location for ministry. Several years

1888

Peter Demens, railroad builder and Russian immigrant, gives the name St. Petersburg to a fledgling city on the western shore of Tampa Bay. It has about 50 residents.

1889

English missionaries establish a mission in St. Petersburg, the Church of the Holy Spirit.

1894

Church of the Holy Spirit becomes St. Peter's, moves to its present location.

1899

St. Peter's completes its sanctuary building at Fourth Street and Second Avenue N.





1925

St. Peter's enlarges, almost doubling the size of its nave.

1938

Parish Hall constructed.

1969

St. Peter's becomes the cathedral of the newly formed Diocese of Southwest Florida.

1990

St. Peter's buys neighboring Baptist Sanctuary and its classroom building.

2001

St. Peter's wins city permission to raze Baptist Sanctuary to build its new campus.

2000-04

Several designs for our new buildings are proposed, with price tags varying from \$6.5-million to \$10.5-million. In the wake of 9/11, with

ago the congregation made a deliberate, conscious decision to stay downtown. Since then we have struggled with what that means: What are the core ministries to which we are called in this place, in this time? How do we respond to the overwhelming need around us? We still grapple with those questions, and we hope our new dean will work with us and others in our city to find creative ideas, supportive partnerships, and invigorating solutions. Opportunities for witness and ministry — to live out our mission statement, “to know Christ and make Christ known” — are around the corner and across the street.

That said, there is no shortage of existing, lively ministries at St. Peter's. On our web site (www.spcathedral.net) you can find a link to our ministry booklet, which enumerates them in detail: groups for youth, women, and men; educational opportunities; outreach and mission work; fund-raising and socializing.

Since 1989, St. Peter's has had three deans (one was elected a bishop, one resigned, one retired); two interims; and three periods with a priest-in-charge or vicar. You might say we are accustomed to change. We know the average time a rector spends in a congregation now is five to seven years and that having a “rector for life” is good for neither the priest nor the congregation. Nonetheless, we look forward to the arrival of a dean who will be here for a time during which plans will be formulated and brought to fruition, a time when we may grow and learn together.

Ministering to Our Congregation, Our Diocese

In the last 18 months we have formed a lay leadership group to provide continuity during clergy transition. In quarterly meetings this group has come together to set priorities, articulate our wishes and needs as we move ahead, and improve the way we operate and cooperate with each other. St. Peter's is a busy place with a lot going on, currently in very limited spaces, and we know that we all succeed better if we work together. This committee has also proved a good way to identify and encourage future leaders.

Although we have been a cathedral since 1969, it is fair to say that St. Peter's has never really lived into its role as the flagship church in the diocese and the bishop's seat. In the last six or seven years we have begun to work deliberately toward taking on this role. Of course we host the major worship events for the diocese: ordinations, election and installation of the bishop, special services. We have also carved out a spot as an educational resource for the diocese, largely through the leadership of our canon evangelist, the Rev. Georgene “Gigi” Conner. We have hosted theologians in residence — the Celtic theologian Philip Newell and the musician/hymn writer John Bell — and we

brought Diana Butler Bass to the cathedral to talk about emerging congregations.

Many of the 34,000 Episcopalians in 78 congregations in this diocese have never been to the cathedral (including some of their clergy!). This is a long, narrow diocese and St. Peter's is a several-hours drive for those at its northern and southern ends, but we are still determined to extend our radical welcome and encourage our brothers and sisters "to visit *your* cathedral."

What Are We Looking For?

When Bishop Dabney Smith met with the cathedral chapter in April 2008, he listed these as the qualities, skills, and abilities he will seek in the next dean:

- * Good administrator
- * Strong pastoral-care skills
- * Knowledge of the Episcopal Church
- * Excellent preacher
- * Good at staff development
- * Likes people
- * Team player in the diocese

The bishop asked the chapter for its suggestions. That list includes:

- * Deep spirituality
- * Continues to encourage lay leadership
- * Scholarly preacher and teacher
- * Upholds and supports diversity
- * Builds ministries
- * Good communications skills
- * Good technical skills (i.e., knows his/her way around a computer, isn't baffled by e-mail, doesn't panic at an attachment)



The position of dean at St. Peter's is not a job for the faint of heart, and it is not a place for on-the-job training. We seek someone who is accustomed to an operation with a lot going on and a lot of balls in the air. We seek a spiritually and emotionally mature adult who is not afraid to exercise the inherent authority in the job of dean, and who willingly shares that authority and decision-making responsibility as appropriate with clergy and lay leadership. A successful dean here will have (and need!) a good sense of humor and a "lighten up!"

charitable giving diverted to survivors and the national economy in a shambles, campaigns are unable to raise the needed funds. Dean resigns in November 2002. In spring of 2004, capital campaign is closed down and plans put on hold while we call a new dean.

2004-06

We consider partnering with a number of developers under a variety of scenarios. Finally sign contract with a local development group to build the spaces we need, topped by condominiums. Capital campaign raises \$2.4-million.

2007

As the economy goes sour, condo deal falls apart. Anonymous donor comes forward, pledges gift of \$3-million. Chapter votes to set aside the Baptist Sanctuary/parking issue and focus on the property we own and control, building the spaces we need for ministry. At long last, the building project gets a green light.

2008

Groundbreaking held in May; onsite work scheduled to start in July; completion expected in late 2009.

St. Peter's by the Numbers

Total Service Attendance

1976	92,345
1980	99,476
1984	65,842
1988	50,121
1992	44,309
1996	39,672
2000	29,844
2007	23,416

Baptized Members

1992	1,234
1996	1,097
2000	988
2004	866
2007	764

attitude. We're accustomed to a leadership style that says, "Take it and run with it."

What Do We Do Well . . .

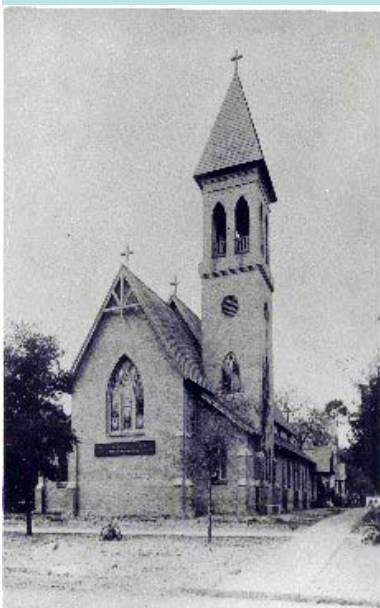
What Needs Some Work?

What's Going Well at St. Peter's?

- * Cooperative, flexible spirit during the stress of building.
- * Eagerness to welcome a new dean.
- * Committed, talented and tireless lay leadership.
- * Desire to expand the depth and expertise of lay leadership in numbers and skills.
- * Deep devotion to worship and prayer.
- * Willingness to try new things.
- * Commitment to expanding the ways we communicate — through paper and electronic newsletters, weekly e-mail blasts, event postings in the weekly service bulletins, and intranet with ministry groups' minutes and forms.
- * Love for St. Peter's as an institution. Many of our members are not just cradle Episcopalians, they're lifelong members of St. Peter's.

What Are We Worried About?

- * Dwindling numbers. As the parochial report notes, average Sunday attendance has fallen by about 40 since 2006, part of a steady trend.
- * Money. Fewer people are pledging more, but this can't be the long-term answer. Despite year-round work by a stewardship team, we've never been able to bring the numbers up to where we would like them to be, and we live hand-to-mouth, pinching the pennies and relying on draws from our line of credit to balance the books.
- * Our ability to turn the memories of yesteryear into active ministry in the future. Among the challenges:
 - ** Music has long been one of the glories of St. Peter's. Our renowned organist/choirmaster Edward Barbieri, who joined us in August 2006, has created an organ scholar program to train a future church musician and a paid program of choral scholars, young people who sing on Sundays. During 2007-08 he put on an ambitious program of weekday and Sunday afternoon Evensongs and concerts, autumn through spring. His innovative digital "virtual orchestra" accompanied paid soloists in "Messiah" at Christmas and the St. John Passion at Easter. But the right formula that works for today still eludes us: to train our children as choristers, to provide a



St. Peter's in 1912

variety of music for services, and to attract sizable audiences from the community for professional performances. The music program is largely funded by donations to a Friends of Music fund and an endowment that will be gone in another year.

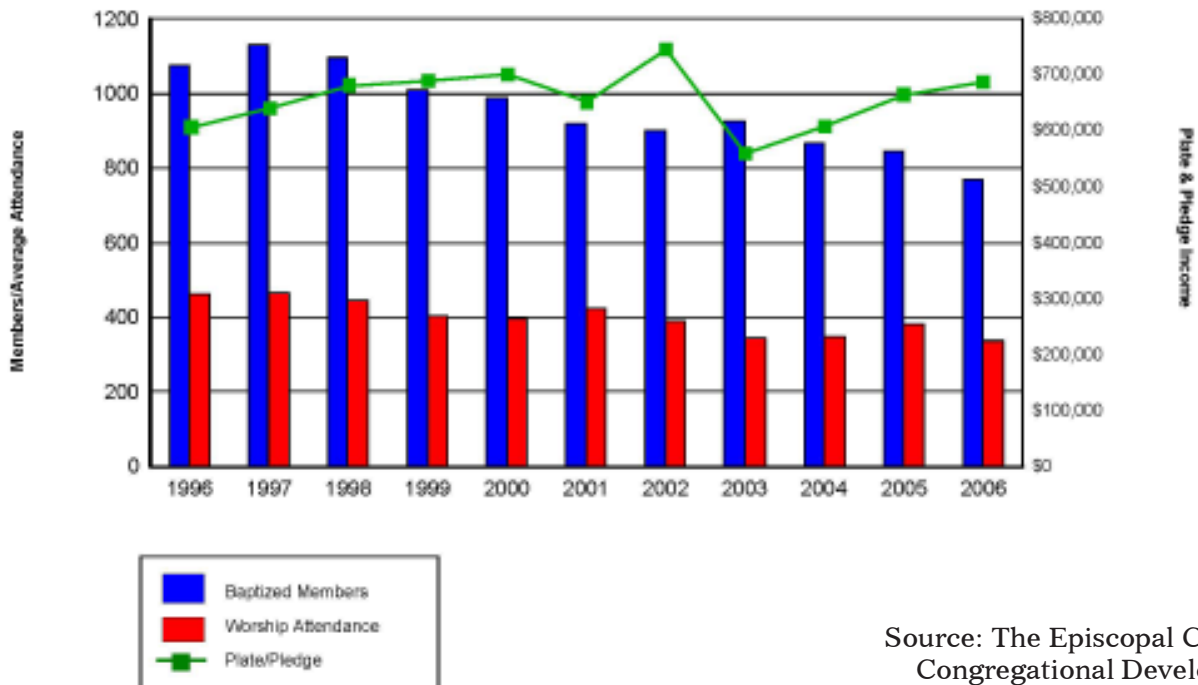
** The number of young children at Sunday school in any given week ranges from none to a dozen or so. It is hard to put on a sustained education program when teachers have no idea how many to prepare for. We have no dedicated person, lay or clergy, in charge of Christian education. The leadership group has identified the naming of such a person as a top priority for the coming year.

** Acknowledging the realities of church life today. During the baby boom years of the 1950s and '60s, couples' clubs here raised up decades of church leaders, some of whom are still active. Today, families with two working parents and children are busy with jobs, school, sports, and other activities and demands. Many of the people who walk through our doors are older singles and couples. Some of them are gay and lesbian Episcopalians who have found in St. Peter's a safe, friendly, and welcoming atmosphere.

Total pledging units since 1992

1992	287
1996	303
2000	228
2004	219
2005	263
2006	240
2007	235
2008	207

Participation & Giving Trends
St Peters Episcopal Cathedral, St Petersburg, FL (9190-4581)



Source: The Episcopal Church / Congregational Development

Architect's renderings of our new buildings.



Our New Building — at Long Last!

It was never difficult to persuade our congregation that our buildings had outlived their usefulness and needed to be replaced. Many of our support structures were built around 1938. They had not been upgraded over the years and they presented serious health and safety hazards. They were beyond renovation.

The hard part was coming up with the right plan at a price our congregation could afford. For several years we considered partnering with developers, but those proposals never worked out. Finally, we developed a plan that makes sense and that we can afford. In the winter of 2007-08 we razed all the buildings on our campus, except for the cathedral itself, to make way for our new complex. Total price tag of the new building: \$7.7-million, paid for with \$2.4-million in members' pledges to a capital campaign, \$3-million from an anonymous donor, lease payments from tenants in the new building, and \$1.1-million from the sale or leveraging of adjacent property. We cannot overstate our congregation's joy and pride at this long-awaited accomplishment.

We held a festive groundbreaking in May (see the slide show at our web site, www.spcathedral.net) and construction begins in July. We expect to move into the new building in the last quarter of 2009.

Now we are turning our attention to the former Baptist Sanctuary, which we purchased 18 years ago. We are seeking \$1-million in seed money to retain the historic facade of the sanctuary; tear down the



back of this crumbling structure; and create a gated worship garden with labyrinth, benches, and water feature. We plan to create a columbarium, for both Episcopalians and non-Episcopalians, that will provide a long-term revenue source for the cathedral.

What Draws Us Here?

What Might Draw You Here?

As the diocesan map shows, there are nine other churches in our deanery, seven of them planted by St. Peter's back in the Baby Boom days of the 1950s and '60s. We all have many choices about where to go to church. Many of us drive past other Episcopal churches to come to St. Peter's. Why? What attracts us here?

The openness and welcome. The solid preaching that pushes you to think. The commitment to social justice. The friendliness and hospitality. It's on a bus line, I can get there without a car! You can ask questions and doubt and say you're not sure. The classes. The music. The different services.

— Voices of parishioners, June 2008

As a cathedral community may we be messengers of Christ's healing and hope. . . . The cathedral is a sacred place where we can come to weep and laugh in common, renewed and forgiven in God's enfolding love and light.

— Prayers of the People at the Cathedral, June 15, 2008

Now you know something about us. We invite you to discern with us whether God calls you to St. Peter's as our dean: to walk beside us, to know us and love us and let us know and love you; to comfort us and challenge us; to help us expand our vision of what we might become. We will keep you, our candidates, in our prayers, and we invite you to keep us in yours.

God, show us whom you are selecting at this time to lead this church!

– Selecting Church Leaders
(Alban Institute, 2002)

Here am I! Send me!

(Isaiah 6:8)

Previous Deans of St. Peter's

1970-81 Leroy D. Lawson

1981-86 Robert N. Giannini

1986-98 Barry R. Howe

1998-2002 Randall K. Hehr

2004-08 Russell L. Johnson

To contact the Discernment Committee:

St. Peter's Episcopal Cathedral
Discernment Committee
PO Box 1047
St. Petersburg, FL 33731

Candidate inquiries:

The Rev. Michael Durning
Canon to the Ordinary
Diocese of Southwest Florida
(941) 556-0315
mdurning@episcopalswfl.org